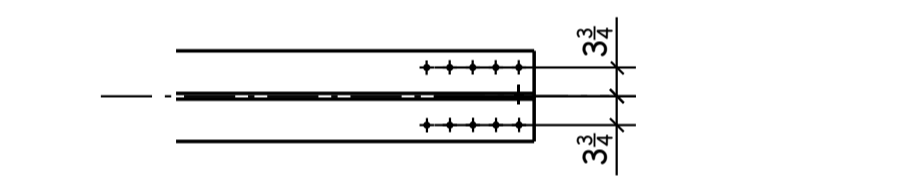
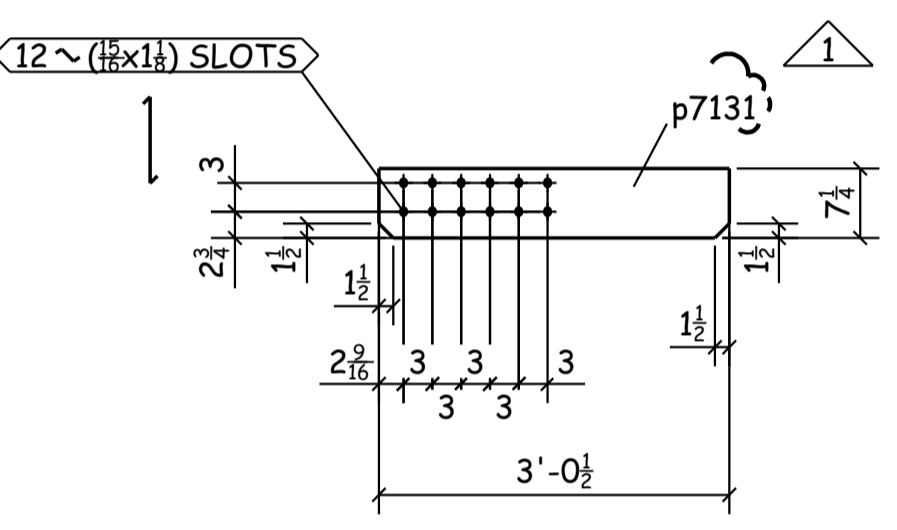
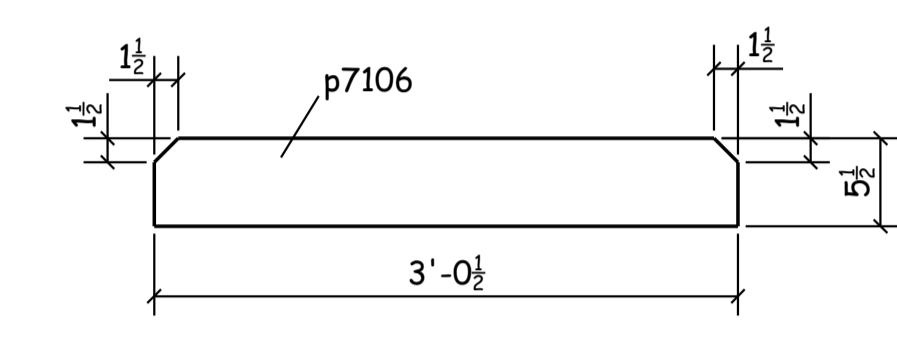
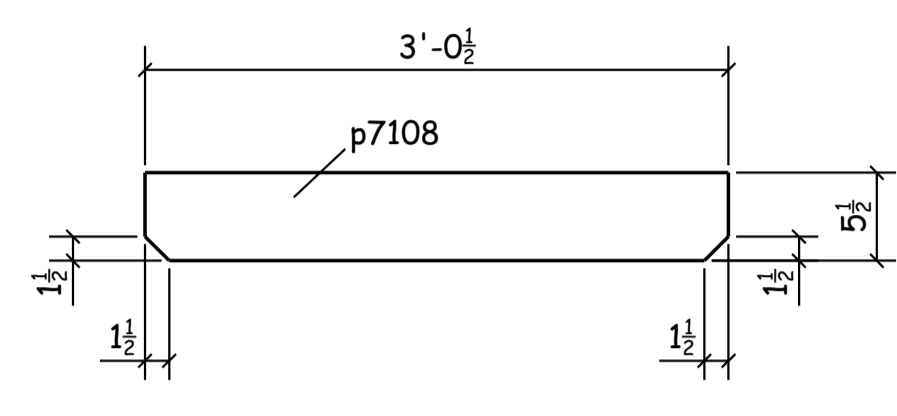
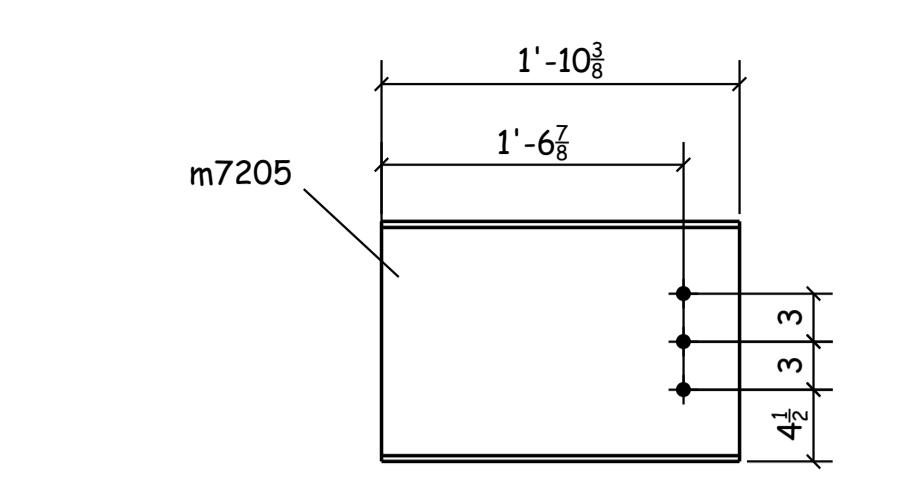
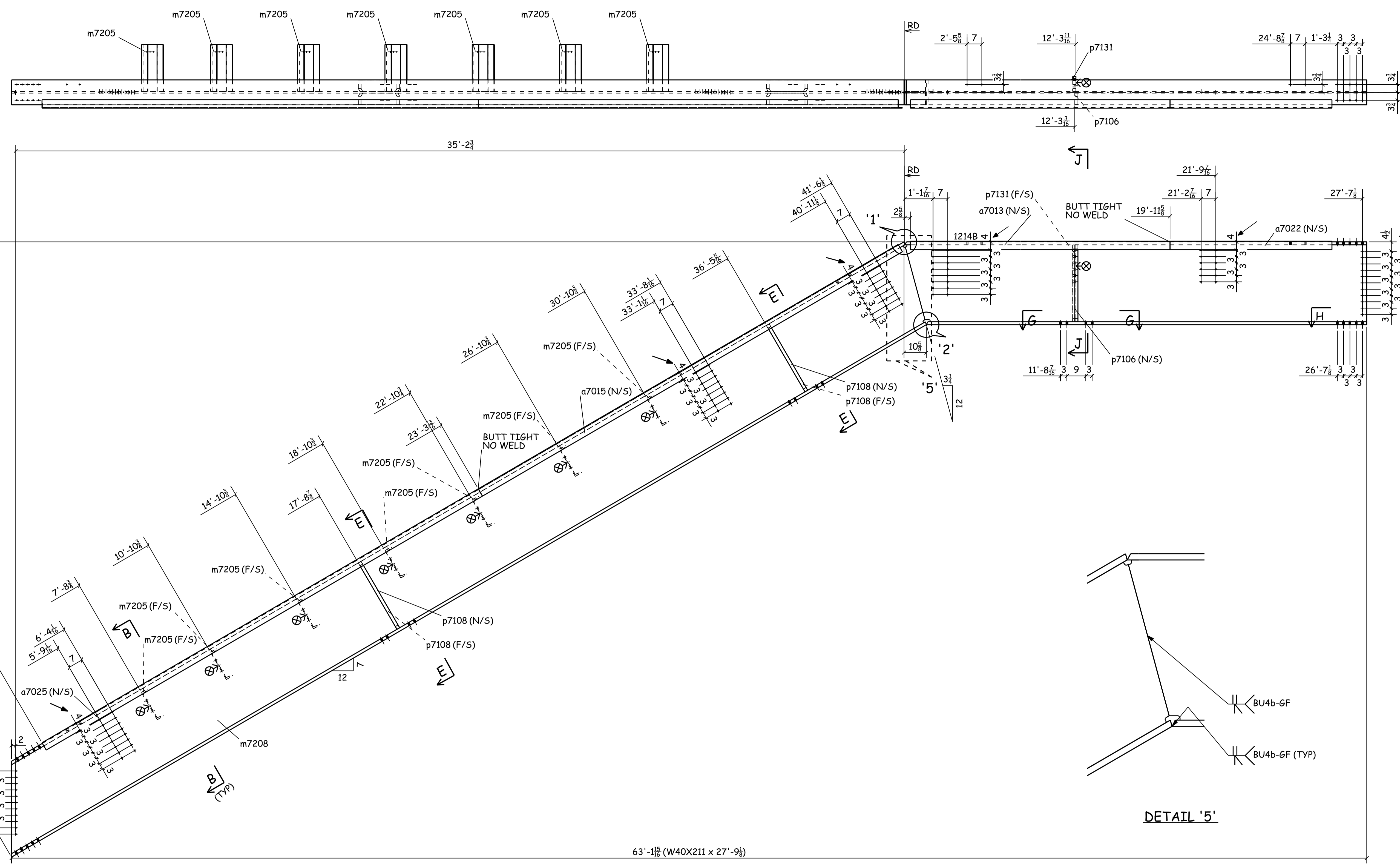
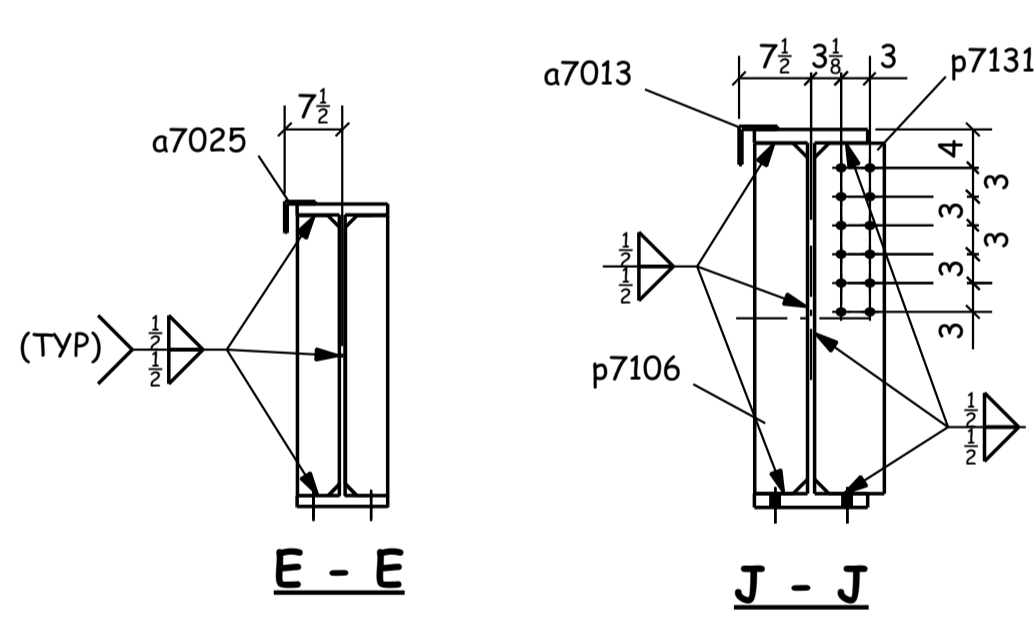


03/30/2007
 11:40:01
 W40X211
 d 39 3/8"
 tw 3/4"
 bf 11 13/16"
 tf 1 7/16"



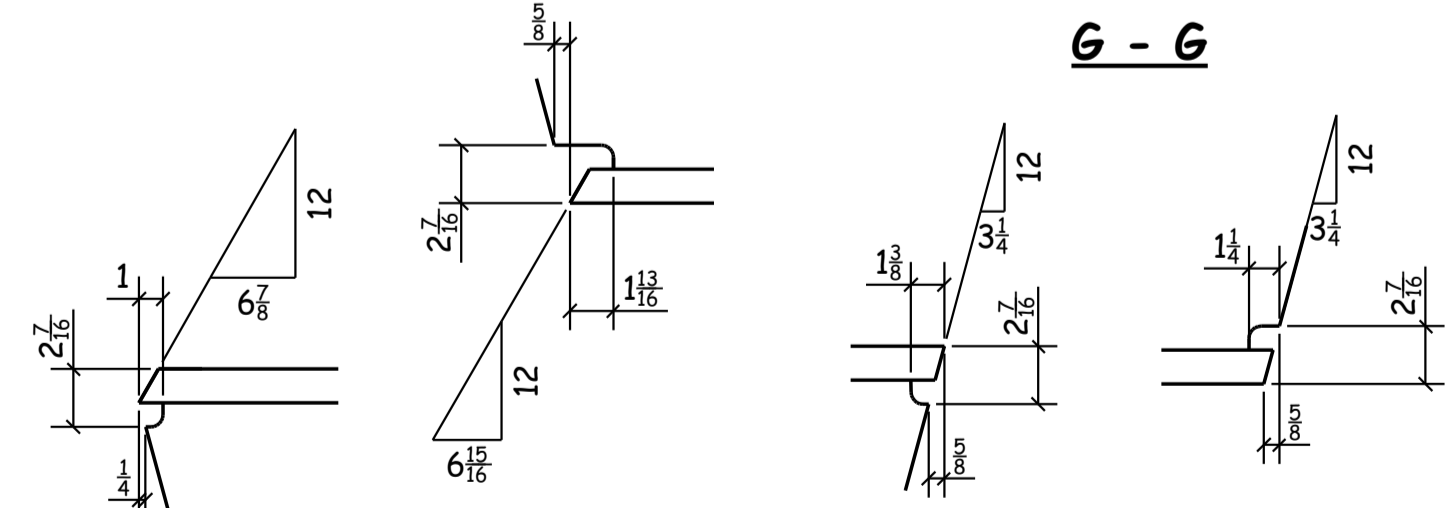
H - H



E - E

J - J

G - G



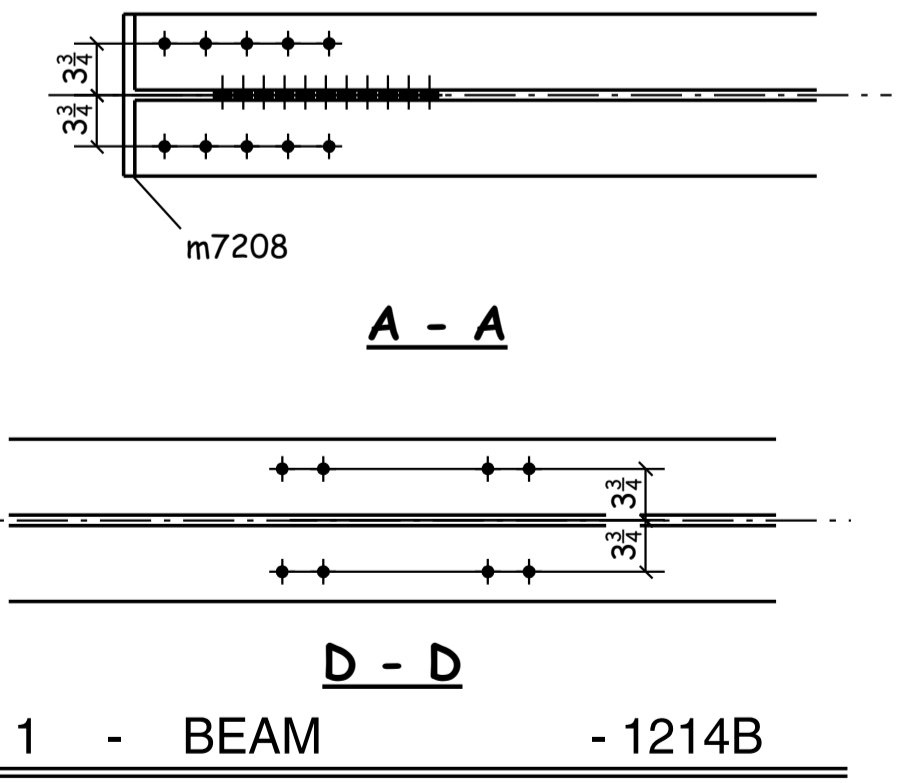
DETAIL '1'

DETAIL '2'

DETAIL '3'

DETAIL '4'

DETAIL '5'



1 - BEAM - 1214B

TOTAL QTY.	UNIT QTY.	MARK	DESCRIPTION	LENGTH	UNIT WT.	REMARKS	PGLN
1	1	1214B	BEAM				
1	1	1214B	W40X211	27'-9 1/8"	5858	A992 B.1E	
1	1	a7013	L4X4X5/16	19'-9"	161	PLAIN MATERIAL	
1	1	a7015	L4X4X5/16	19'-3"	157	PLAIN MATERIAL	
1	1	a7022	L4X4X5/16	6'-5"	52	PLAIN MATERIAL	
1	1	a7025	L4X4X5/16	20'-0"	163	PLAIN MATERIAL	
7	7	m7205	C15X33.9	1'-10 3/8"	442		
1	1	m7208	W40X211	42'-9 7/8"	9035	A992	
1	1	p7106	PL1 1/2X5 1/2	3'-0 1/2"	85		
4	4	p7108	PL1 1/2X5 1/2	3'-0 1/2"	341		
1	1	p7131	PL1 1/2X7 1/4	3'-0 1/2"	113		

SHIP	GRID LOC.	ELEV.	REF.	I.D. NO.
12	29.1-W12-AA-Z1	65'-6"	E04	166726

SHOP NOTES:
 X = THE SIDE TO BE STRIPED
 * ALL COPES TO BE RADIUSED *

UNIT QTY.	FIELD BOLTS	LENGTH
22	7/8" DIA. A325C	BOLT 2 1/2"
24	7/8" DIA. A325N	BOLT 3 3/4"
40	7/8" DIA. A325C	BOLT 4"

PROJECT					
MGM GRAND PEQUOT BRIDGE					
HOLES	SHOP BOLTS	ELECTRODES	ALL MAT'L TO BE ASTM A36 (UN)		
15/160	A325N	E70XX (LH)			
SHOP PAINT		SURFACE PREP	DRY		
SSPC-SP2					
UNNT	DATE	CHKD BY	DATE	CONTRACT NO.	SHT. NO.
1	03/30/07	GENERAL REVISION SJ			
REV	DATE	REMARKS			
RS	01/19/2007	SJ 01/19/07		1972	1214B